



**Unley**HighSchool

# Unley High School Annual Report 2013



## Context

<b>School Name:</b>	Unley High School	<b>School Number:</b>	0797
<b>Principal:</b>	Ms Susan Cameron	<b>Region:</b>	Southern Adelaide

Unley High School is a comprehensive secondary school with a history and tradition dating back to 1910. We pride ourselves on our record of academic success, our sporting involvement, our student wellbeing and our connection with families.

As a school community, we are committed to achievement. We have set ourselves two goals for improvement. One is to increase student engagement and achievement and the other to increase community connection. We are always seeking to improve our practice and every teacher makes a personal commitment to improve student engagement and achievement.

Our school community actively promotes a culture of excellence in all areas. Students are expected to display honesty and respect in all of their dealings and to take personal responsibility for their behaviour.

We promote co-operative working relationships between all members of the school community and have parents as partners in student learning.

## 2013 Highlights

The fundamental purpose of schools is to provide every student with the opportunities and support to reach their potential as a learner. We began the year with the news with that our 2012 Year 12 Graduates had achieved very highly. Our proportion of A and B and grades had gone up, D and E grades down and our SACE completion rate had improved. This gave us confidence that our strategy to focus on task redesign to increase student engagement and achievement was bearing fruit.

This remained the focus for Professional Development throughout the year. Teachers were supported with additional professional learning about Literacy and Information Communication Technology (ICT). Each teacher in each Learning Area, has worked on the design of their tasks –outstanding works of art, literature, technology, social science, mathematics and science have resulted. We are proud of our students and the quality of the results they achieve, and the outstanding work our teachers do to support their learning.

One of the things that supports student engagement and achievement is the sense of connection they have with the school. At Unley High School this comes from the quality of relationship students build with each other, their involvement in the rich co curricula programs and from the connection our parents have with the school. We have worked hard to create this very strong culture. We offer students programs such as Wellbeing and Relationships days, Cyberbullying Workshops, Multicultural days and Reconciliation events, which support students to understand the causes and effects of discrimination and unkindness. Our sporting and cultural events are varied and interesting – students participate in a wide range of sports and physical challenges, visit exhibitions and plays and travel interstate and overseas. In addition our parents have many avenues to be involved and connected with the school. The Parent Voice Committee, working alongside staff, have developed a range of programs to assist parents support their children. One of the most successful was the six workshop series Parents as Career Partners, which was very well received.

At Unley High School we pride ourselves on our traditions and our innovation. We believe it is the mix of these that best prepare young people for the future.

## Report from Governing Council

Unley High School Council is comprised of active voluntary participants from the parents of our school students and dedicated members of staff, who together work in providing advice on strategic matters to assist the school progress through the upcoming year(s). The School Council is a terrific avenue to participate in preparing our young adults for life in and after school. The Council's strategic role compliments the staff's operational role in the day to day running of an educational enterprise of over 1,200 students. I certainly recommend nominating for the school council or joining one of the subcommittees that report to the School Council.

I have recently participated in the Year 12 Graduation Ceremony and Year 8 to 11 Awards Ceremony and have come away from both events with a strong sense of trust and pride that our children, through their attendance at Unley High School, will be strong ambassadors for the School and outstanding young adults, who I believe will become leaders. In collaboration with students the dedicated staff we entrust to educate our young children have created focused, charitable, compassionate and active young people that we need in our future society. The overwhelming sense of personal achievement and the ability to strive for their best outcome as individuals was displayed at these ceremonies, and I am honoured to be a part of this terrific school.

Unley High School continues to progress educationally in 2013, especially with the challenges of the continued rollout of the Australian Curriculum, the restructure of the Department for Education and Child Development and the appointment of its new CEO. I believe our strong focus of engaging with our students in their educational outcomes, and continuing to develop and engage with our community are our strengths as a school community. Our Parent Voice and Student Voice committees have shown how our parents and students are committed to delivering the best educational and subsequent life outcomes for our children.

The reintroduction of a House System at Sports Days proved popular, and was an added incentive for students and staff to be more competitive whilst enjoying the camaraderie of collaborating in a team environment. The Year 12 Formal at the National Wine Centre celebrated our children becoming young adults ready for the next exciting stage of their lives. They have certainly grown up and they all looked wonderful.

The Mobile Learning or iPad Program is now in its second year, encouraging both students and staff to stretch themselves in embracing 21<sup>st</sup> Century technology for their education. I have always been a strong supporter of this initiative and believe such programs will definitely equip our children now in their educational life and also in the life that follows. Gilles Street Primary School has this year introduced a similar program and Brighton Secondary School has announced a similar program for 2014. Unley High School was one of only three schools in South Australia and one of 16 nationally to be recognised this year for our iPad Program. Congratulations to the staff and students involved.

Early next year, construction begins on our new Trade Training Centre after a successful bid to extend our Plumbing Pathway and other Technology Studies programs in a modern and well equipped facility. As a School Council we strongly focus on gaining the funding we need to further develop and improve our facilities to supplement the staff and students desire to strive for *the utmost for the highest* personal achievements.



Marcel de Ruyter, Chair, Unley High School Council

## Site Improvement Planning

Unley High School has two goals, the first to Increase Student Engagement and Achievement and the second, to Increase Community Connection.

### Goal 1 *Increase Student Engagement and Achievement*

The basis of our improvement process was to on work in Learning Areas, with each Coordinator identifying targets for improvement based upon their results over previous years.

To support this, we undertook school wide Learning Area-based, Professional Learning, which focused on Literacy. To ensure that students could achieve at higher levels, teachers worked together on their learning tasks, ensuring that they included very explicit literacy components. A representative from each Learning Area was trained as a facilitator to lead and deliver the Literacy Training to their colleagues. The model they used was to deliver the theory in one week and then teachers applied their learning to their task design in the second week. Each Learning Area planned their improvement and then shared their learning with the entire staff to promote and share good teaching practice. The work on Literacy development was being undertaken within the context of implementing the Australian Curriculum, with some Learning Areas fully developed and others still at draft stage. This work is planned to continue into 2014 as part of the ongoing Professional Development Program.

The tables and graphs below show the breakdown of grades for Year 8, 9 and 10 over the last three years.

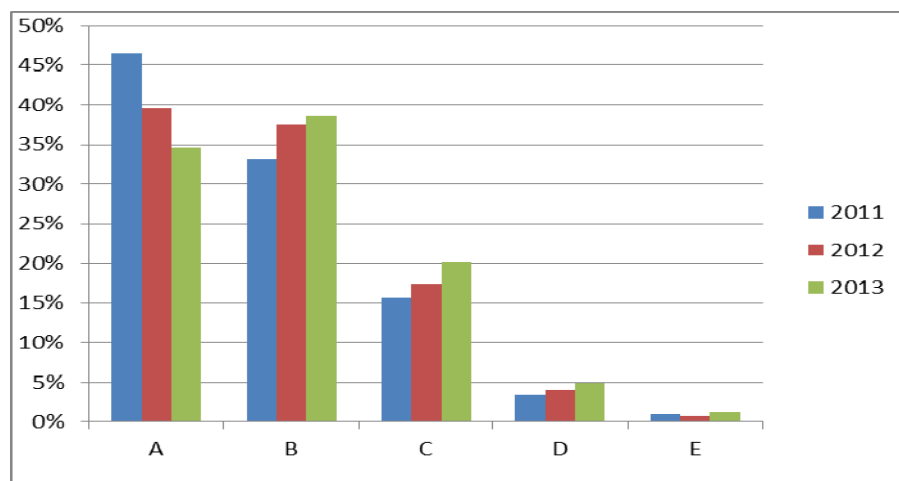
In Year 8 there is a drop in the number of A Grades in comparison to previous years. This may be the result of teachers redesigning learning tasks in line with the Australian Curriculum. The related introduction of the Performance Standards for Assessment gives more consistency within the school and improved State and National comparability. It is likely that we now have a more accurate measure of our students' achievement.

In Year 9 and 10 the 2013 results show a slight improvement in A Grades in comparison to previous years.

Our goal for 2014 is to continue our work on increasing the percentage of A and B Grades across all year levels and reducing D and E Grades. In 2014, teachers will be involved in Professional Learning Teams (PLT's) with an aim to further increase teachers understanding of what makes effective teaching and learning.

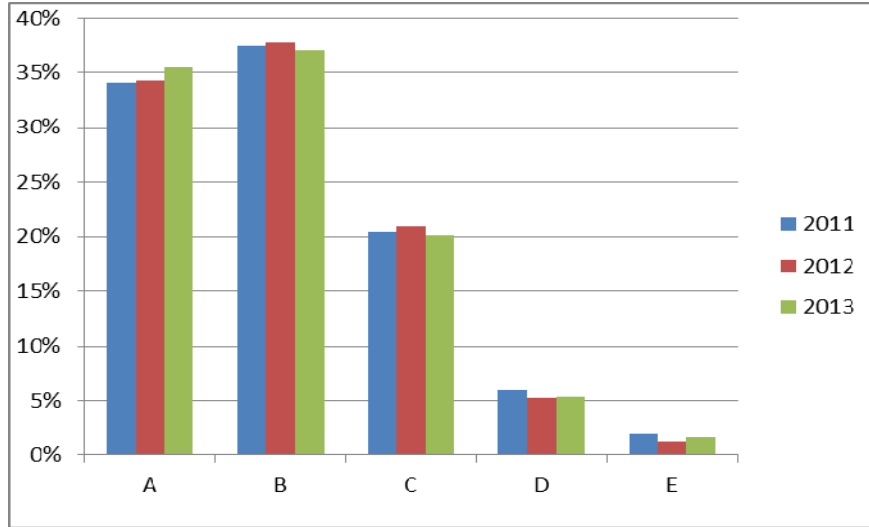
#### Year 8

	A	B	C	D	E
2011	47%	33%	16%	3%	1%
2012	40%	38%	17%	4%	1%
2013	35%	39%	20%	5%	1%



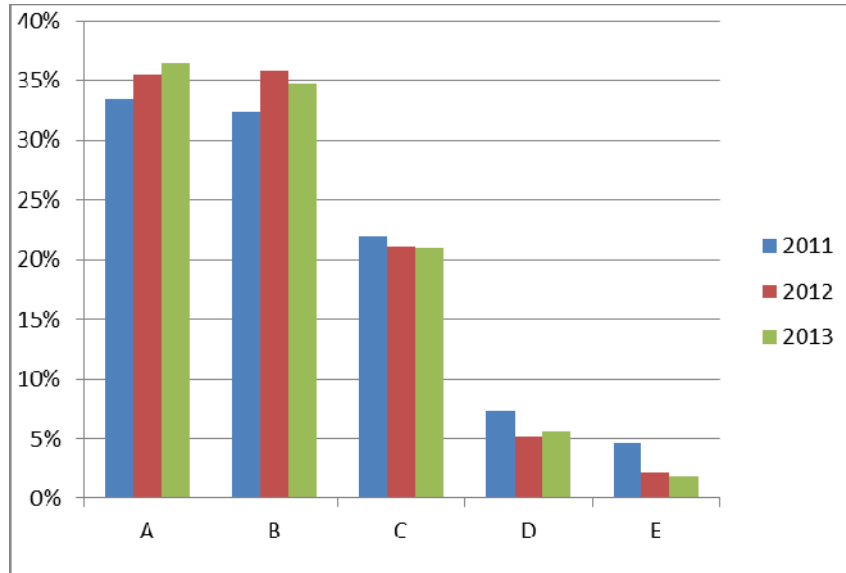
**Year 9**

	A	B	C	D	E
2011	34%	37%	20%	6%	2%
2012	34%	38%	21%	5%	1%
2013	35%	37%	20%	5%	2%



**Year 10**

	A	B	C	D	E
2011	34%	32%	22%	7%	5%
2012	36%	36%	21%	5%	2%
2013	37%	35%	21%	6%	2%



Examples of Learning Area work:

### **Learning Area - Science**

#### *Goal and target set for 2013*

1. Write units for Year 8 and 9 in line with the Australian Curriculum.
2. Improve literacy understanding and knowledge for Learning Area and work on strategies to improve literacy skills of students.
3. Design formative tasks to develop literacy skills essential to science.

#### *Activities undertaken/completed*

1. Literacy task trialed in Year 8 unit.
2. Common assessment task trialed in Year 9 unit.
3. Year 9 unit written in line with the Australian Curriculum

#### *Outcomes achieved for students based on Semester 2 results*

1. Number of students achieving an "A" grade in Year 9 increased from 2012 to 2013 by 3%
2. Number of students who received failing grades in Year 8 decreased from 2012 to 2013 by 4%
3. 30% increase in number of students doing a Stage 1 Science in 2013 compared to 2012.
4. Number of students receiving failing grades in Stage 2 Chemistry decreased from 2012 to 2013.

### **Learning Area - English**

#### *Goal and target set for 2013*

1. Reduce Year 8 and 9 D and E grades by 4% and further improve A and B grades.
2. Improve higher grades in Stage 2 English
3. Improve the 98% pass rate of Year 11.
4. Write units for Year 8 and 9 in line with the Australian Curriculum.
5. Improve Literacy understanding and knowledge for faculty and work on strategies to improve student literacy skills.

#### *Activities undertaken/completed*

1. All English teachers undertook Literacy Training.
2. Wrote Units for Year 8 and 9 with explicit literacy requirements for assessment.
3. Stage 2 Cross Moderation of assessments.
4. Year 12 teachers attended the Refresher course at the beginning of the year.
5. The chief moderator's report was discussed at Learning Area meetings and strategies developed based on that report.
6. Shared assessment plans and common context sheets were used by all teachers to ensure consistency.
7. Assessment was moderated when needed by new teachers.
8. Proposed units of work were discussed to ensure they would meet SACE and student needs. Information and ideas shared freely with new teachers and placed on network for common access ensured better practice.

#### *Outcomes achieved for students*

##### Stage 2 Results

1. 4% increase in A+ grade in Stage 2 English Communications compared to 2012 and an increase of 3.44% in A grades. Decrease to zero E grades.
2. Minor adjustments only to results after moderation.

##### Stage 1 Results

1. Increase of 7% in A grades and a decrease in D and E grades of 1.27%.
2. 100% pass rate in English Pathways.

##### Years 8, 9 and 10, based on semester 2 Results

1. A 1% increase in A grades in Year 8 and no change in D and E grades. Five students failed English in both 2012 and 2013.
2. A 1% increase in A grades in Year 9 but fewer fails:-11 students failed in 2012 and only 5 in 2013.
3. In Year 10, the same number of A's were achieved as in 2012, but fewer fails:-11 students in 2013 and 14 in 2012.

## **Goal 2      Increase Community Connection**

**Target 1:            To offer at least one parent activity per a term and to increase the number of parents attending each activity by 3%.**

The Parent Voice Committee, consisting of 33 regular participants, met twice per term to shape the program to involve parents more in the school. They determined the topics and nature of the programs.

- In Term 1 we held our annual welcome morning tea with 87 parents attending, an increase of 16% over the previous year and an increase of 30% from 2011.
- The viewing of the Year 8 Camp video and sausage sizzle was attended by 190 parents and students, a 3% decrease compared to the previous year, possibly due to the rain on the night.
- Six “Parents as Career Partners” workshops were run across terms two, three and four, where parents had the ability to attend the workshops they felt were relevant to them and their child. The workshops were a great success with over 30 parents attending each one. The feedback received from these workshops showed 100% satisfaction.
- A Mental Health and the Effects of Alcohol awareness seminar was organised in term 3 which was attended by 45 parents across all year levels. Feedback from this workshop also showed 100% satisfaction.
- The annual Greek spring dance was once again held at the Goodwood community Centre with 270 Parents and students attending.
- The Year 12 Parent Graduation evening was held in October with 60 parents attending. This was a 40% drop in numbers compared to the previous year.
- A very successful Quiz night was held in term 4 with 300 Parents, students and teachers attending. This event raised \$12000.
- iPad Learning for Parents Seminar was held to support parents understanding of the use of the iPad and its integration into the Middle School curriculum.

Our aim was to hold one activity per term for parents to strengthen the connection to the school and give them the skills they wanted in areas such as Career Choices and Mental Health to support their Children. While we met our target, increasing parent involvement was met in some activities but not in others. The Parent Voice Committee will review the data to determine the program for 2014.

In addition to activities planned by Parent Voice, the Rowing Club continues to be a strong vehicle for community involvement. Club activities include regular regattas, camps, fundraising activities and an annual dinner all attracting hundreds of staff, students and parents.

**Target 2:            To increase the number of community curriculum based activities.**

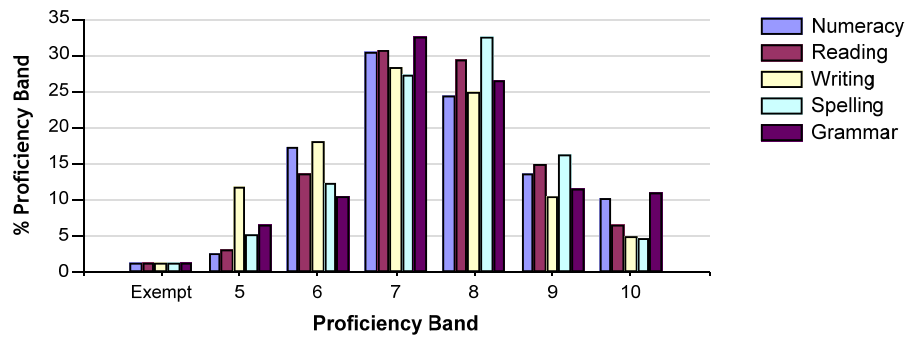
Over the last two years Learning Area Coordinators have been working on increasing the opportunities for students to engage with the community in an authentic way.

The activities below are examples of some of the activities undertaken in 2013.

- Year 9 Community Care for 2013 saw a number of Home Groups organising activities which took the students into the community, visiting Nursing Homes, took part in the City to Bay Run, visited the Women’s and Children’s Hospital and spent time with young children who had a long stay in hospital.
- Year 11 Art students exhibited their Art work in the Mitcham Cultural Centre.
- Year 12 Art students exhibited their work in the Unley High School Gallery.
- Senior school Art trip to Melbourne.
- The Year 10 Challenge gave students the opportunity to work with Mentors from industry and universities.
- Year 9 Gifted and Talented students took part in a Forensic Science workshop at Flinders University.
- Students from across the Year Levels had an opportunity to spend a day working with the United Nations Youth ambassadors, experiencing what is like to be a United Nations ambassador.
- Music students visited and performed at our local primary schools.
- Language students had a variety of excursions where the students used their language skills in an authentic setting such as German students visiting the German Club, and Chinese students going to Highgate Primary schools to run activities in Chinese for the students.

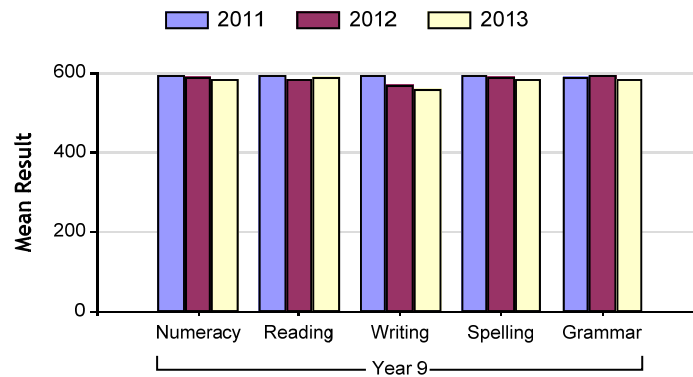
Student Achievement

NAPLaN



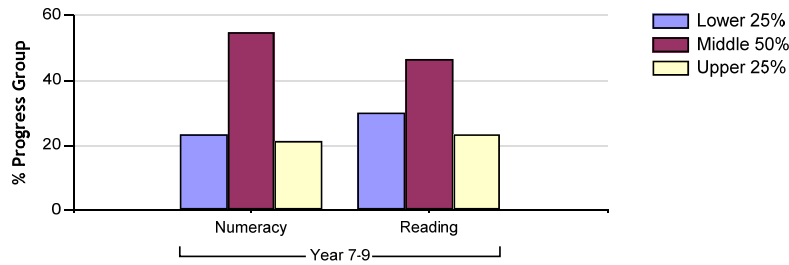
% Proficiency Band by Test Aspect	Year 9						
	Exempt	5	6	7	8	9	10
Numeracy	1.3	2.7	17.3	30.5	24.3	13.7	10.2
Reading	1.3	3.1	13.7	30.8	29.5	15.0	6.6
Writing	1.3	11.9	18.1	28.3	24.8	10.6	4.9
Spelling	1.3	5.3	12.3	27.3	32.6	16.3	4.8
Grammar	1.3	6.6	10.6	32.6	26.4	11.5	11.0

Mean Scores



Mean Scores by Test Aspect	Year 9		
	2011	2012	2013
Numeracy	595.6	592.3	587.5
Reading	595.8	587.4	589.9
Writing	597.9	571.7	559.2
Spelling	594.4	591.9	586.6
Grammar	592.7	594.0	587.5





Growth by Test Aspect	Year 7-9	
	Progress Group	Site
Numeracy	Lower 25%	23.5
	Middle 50%	55.1
	Upper 25%	21.4
Reading	Lower 25%	30.2
	Middle 50%	46.6
	Upper 25%	23.3

### NAPLaN Analysis

In 2013 78.7 % of students achieved a band 7 or above in numeracy, 81.9 % of students achieved a band 7 or above in reading, 68% achieved a band 7 or above in writing, 81% achieved a band 7 or above in spelling and 81.5 % achieved a band 7 above in grammar.

There has been a slight increase in the number of students who have been identified as below the bench mark in numeracy (1%), reading (0.5%) writing (0.3%), spelling (1.4%) and grammar (4%) in comparison to 2012.

Over the last few years the mean test scores in every aspect of the tests have remained steady with just a small variation, in the mean.

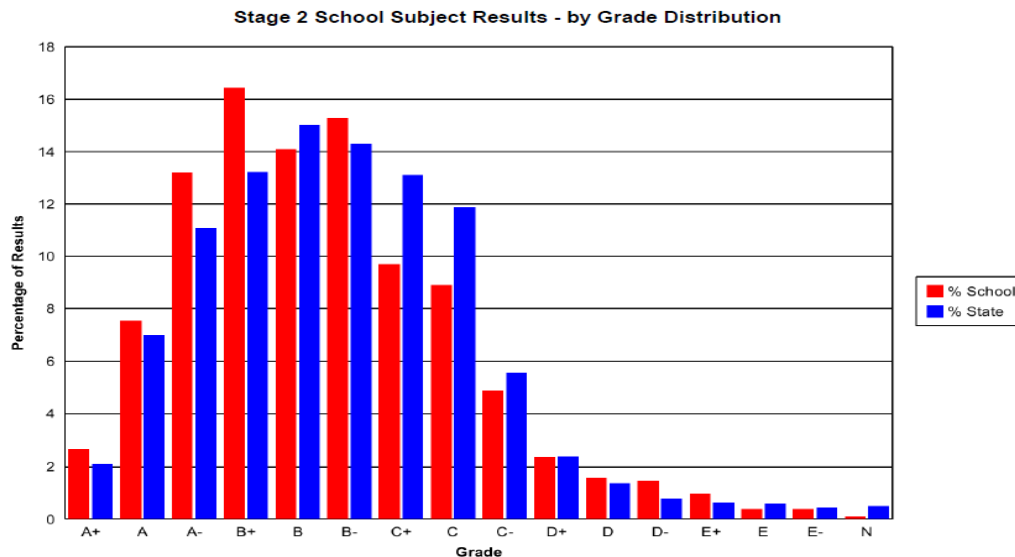
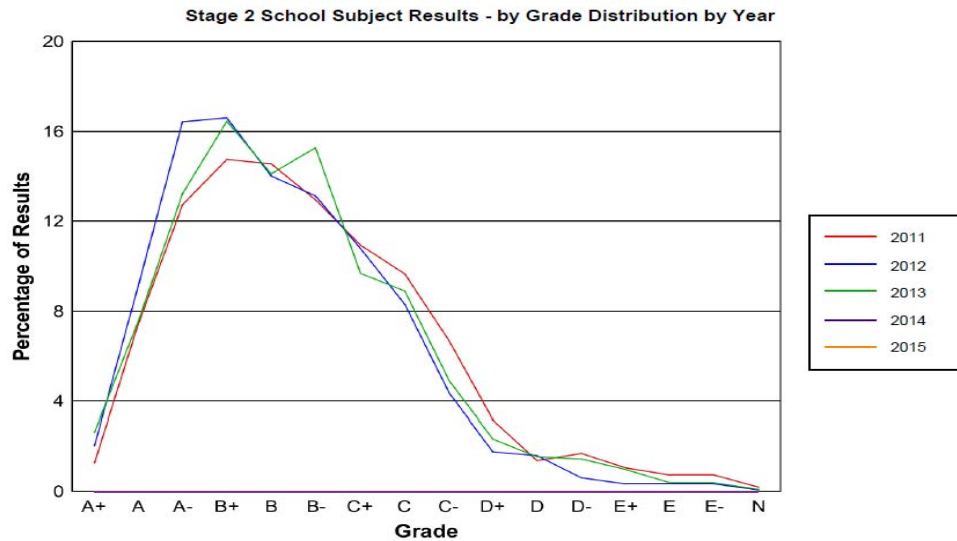
Our goal for 2013 was to increase the percentage of students who were in band 10 in all aspects of the test. This was achieved in Numeracy with a 4.7% increase, in spelling with 0.8% increase and in Grammar with a 7.6% increase. However the percentage of students in band 10 in reading dropped by 3.2% and writing by 5%.

A number of strategies to support students to increase their achievement in all areas of learning and their literacy were put in place, in 2013.

- All teachers participated in workshops on “ Literacy for Learning”
- All English teachers plus two Mathematics teacher, a Language Teacher, a Physical Education Teacher, a Society and Environment Teacher and a Performing Arts teacher participated in the “How Language Works “ workshops
- Year 8 students who were below the bench mark in year 7 were identified and are given extra literacy support in Literacy class.

Writing has been identified as an area for action in 2014. The school is exploring ways to support students in this area.

## Senior Secondary

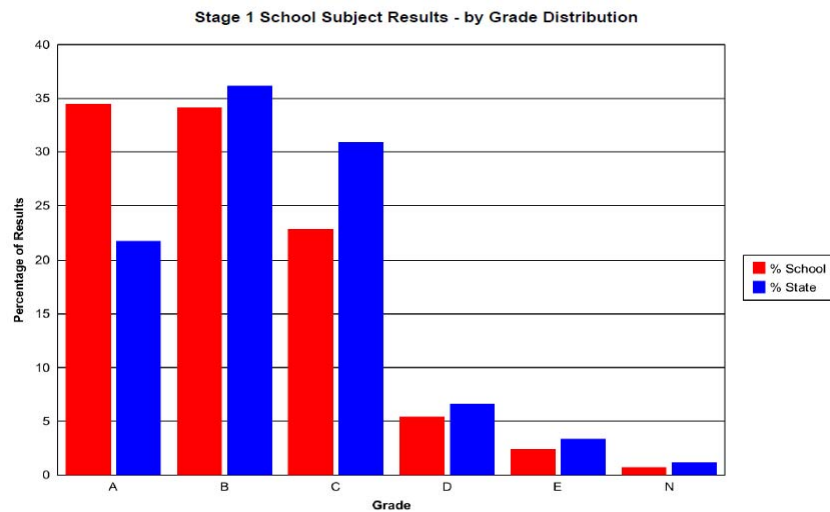
**Stage 2**

While the overall percentage of A and B grades at 69.43% is slightly down on 2012, it remains significantly improved on 2011. In addition there is a pleasing increase in the number of students gaining merits. Fifteen students gained 20 merits between them. Teachers indicate that this is a result of the work they have done with their learning tasks, better scaffolding students to achieve at the highest levels. Particular strengths are the English, Health and Physical Education, Mathematics and Science Learning Areas where the percentage of A grades are above state average.

D and E grades were 8.8% which has increased from 6.8% in the previous year but has decreased from 16% in 2011 and 2010. More than 3% of the failing grades at Stage 2 were at D+. Additional work needs to be done on getting these students over the line.

The SACE Completion rate for 2013 was 93.78% which is 0.7 lower than 2012, but above state average.

The Research Project led to 76% of students increasing their ATAR in 2013.



### **Stage 1**

There has been a growth in achievement of students at Stage 1, where 68.39% of A and B grades were achieved, which is 11.53% above the State and compares favourably with the 56.96% of A and B grades achieved by Stage 1 students at Unley High School in 2012. D and E grades in 2013 were 6.82% of grades compared with 9.63% in the previous year. Our highest achieving subjects in Stage 1, 2013, were English, English as a Second Language, Languages, Health and Food and Hospitality, the Visual and Performing Arts, Information Technology, Communication Products, Tourism and Society and Culture, where the A's and B's were at least 10% percent above that of the school.

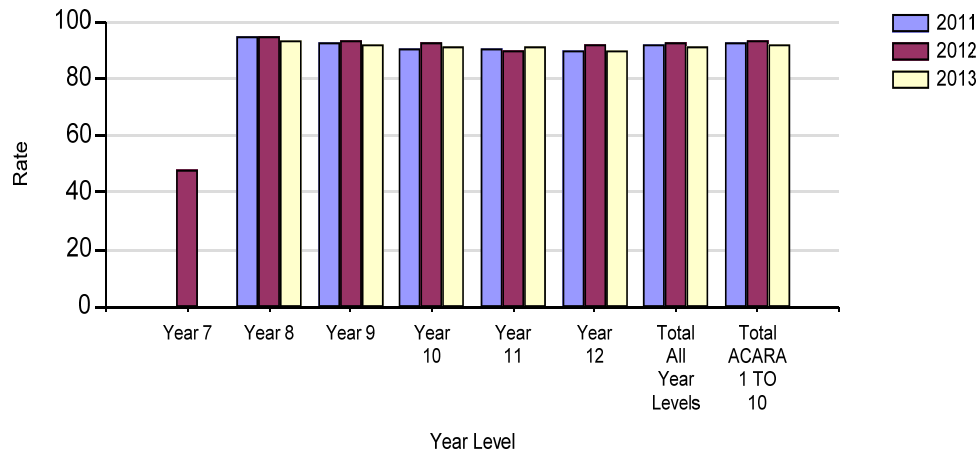
In 2013 18 Year 12s, 39 Year 11s and 4 Year 10s completed Vocational training. The percentage of students in Year 12 undertaking Vocational Education in 2013 was 7.2%.

## Student Data

## Attendance

Attendance at Unley High School remains reasonably constant, with a slight decrease in 2013. There has been a significant increase in the numbers of families seeking an exemption for their child to attend family holidays that in part contributes to this decrease.

National Attendance Rates Semester 1



Attendance by Year Level	% Attendance		
	2011	2012	2013
Year 7		48.3	
Year 8	95.2	94.9	93.3
Year 9	93.2	93.9	92.3
Year 10	90.9	92.7	91.5
Year 11	90.5	90.2	91.3
Year 12	90.0	92.5	90.1
Total All Year Levels	92.0	92.8	91.7
Total ACARA 1 TO 10	93.1	93.8	92.4

## Destination

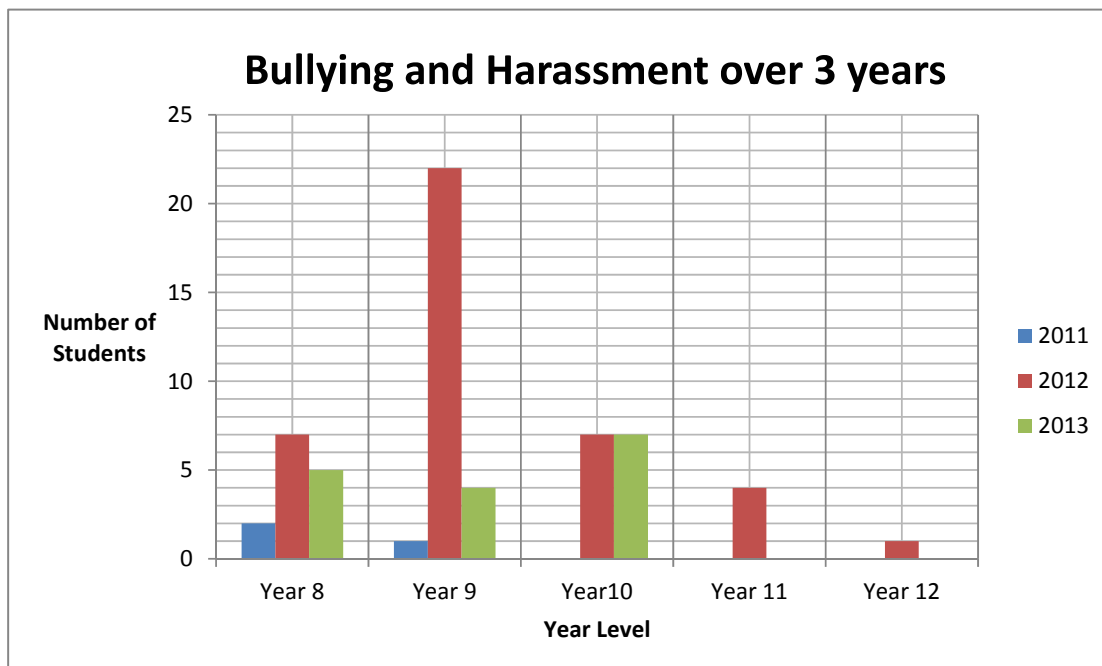
Leave Reason	2012				
	School		Region	Index	DECD
	No	%	%	%	%
Employment	2	0.6%	2.9%	0.9%	2.9%
Interstate/Overseas	39	11.6%	8.7%	12.9%	9.1%
Other	3	0.9%	1.3%	0.6%	2.3%
Seeking Employment	5	1.5%	2.9%	0.9%	3.3%
Tertiary/TAFE/Training	15	4.5%	5.3%	1.7%	4.2%
Transfer to Non-Govt Schl	31	9.2%	9.9%	16.7%	9.8%
Transfer to SA Govt Schl	13	3.9%	45.8%	43.5%	48.0%
Unknown	228	67.9%	23.3%	22.8%	20.4%

Most Unley High School students who show as unknown are intending to take up a University course.

## Behaviour Management

The chart below shows the Bullying and Harassment data for the period 2011 to 2013. Reduction in Bullying and harassment incidents may be due to promotion of Code of Behaviour and the implementation of a stronger Pastoral Care Program.

Bullying incidents represented in this graph refer to matters which resulted in Suspension or Exclusion. The incident of bullying may represent one student repeating inappropriate behaviour or multiple students and involved in one off events.



## Client Opinion

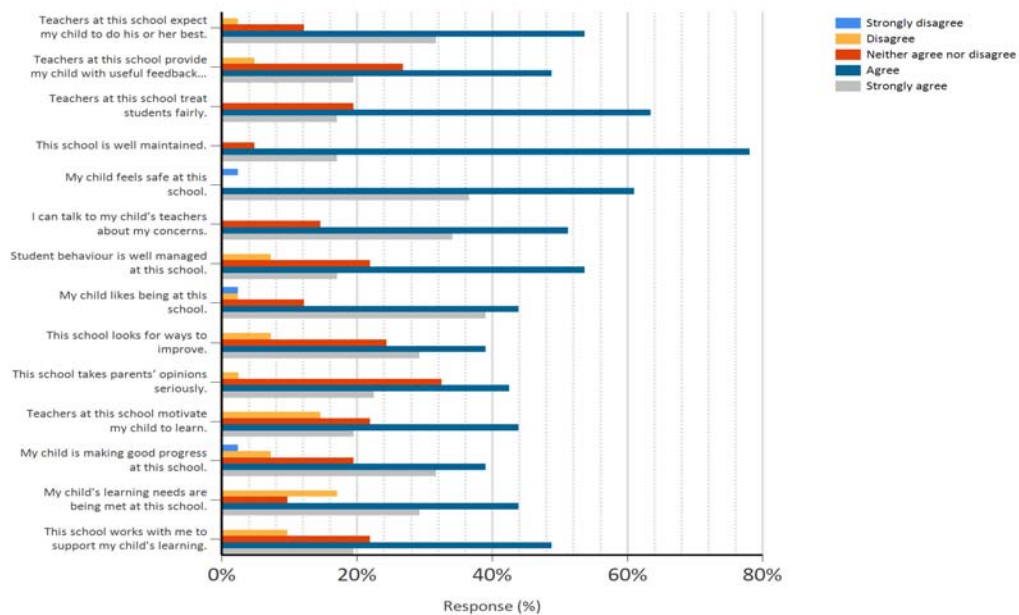
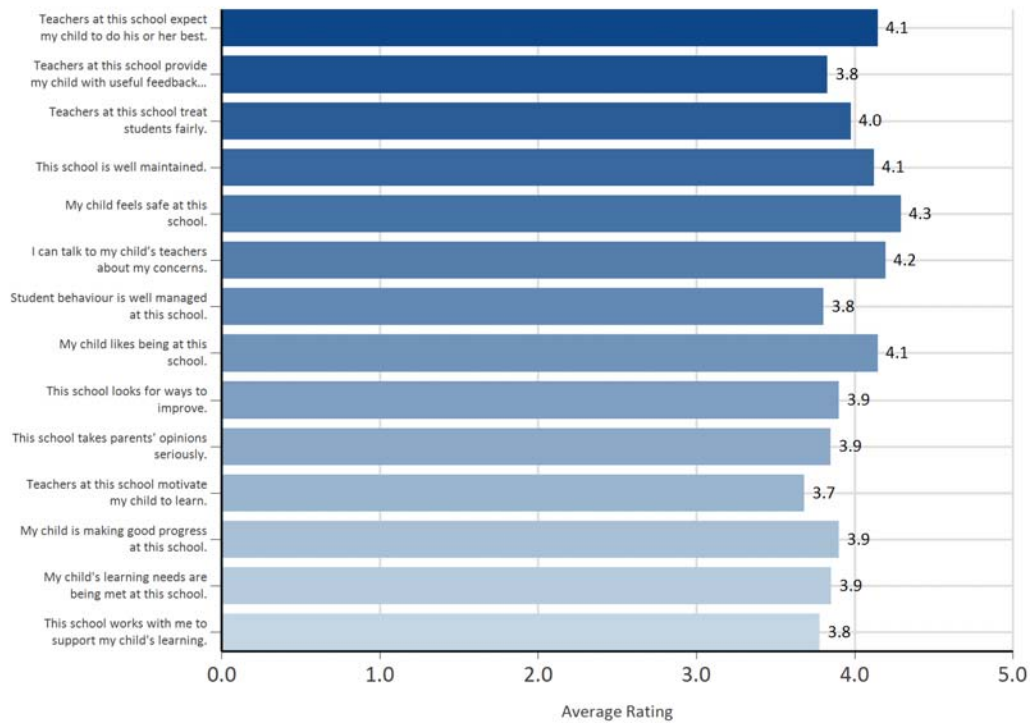
### Student Data

Question - How important is this?	Yr 8	Yr 9	Yr 10	Yr 11	Yr 12	Overall
1. In general my teachers got me interested in the lesson material	2.89	3.17	3.61	3.42	3.59	3.34
2. My teachers encouraged me to achieve.	3.22	3.34	3.55	3.37	3.84	3.46
3. Teachers explained things well.	3.37	3.52	3.76	3.63	3.86	3.63
4. My teachers told me about ways to remember what we were learning	2.89	3.1	3.27	3.13	3.19	3.12
5. My teachers would check our understanding of lesson material.	3.04	3.23	3.48	3.43	3.31	3.30
6. My teachers would closely look at ways in which we were learning.	2.84	2.99	3.24	3.04	3.14	3.05
7. My teachers lessons were well organised.	3.07	3.28	3.48	3.33	3.59	3.35
8. My teachers would generally try to provide for different students learning needs.	3.15	3.22	3.49	3.34	3.68	3.38
9. My teachers would provide useful feedback.	3.19	3.26	3.52	3.51	3.70	3.44
10. 1 My teachers would extend me during classes	2.63	2.82	3.36	3.40	3.09	3.06
11. My teachers arranged for student to have some choice in class activity.	2.89	3.01	3.08	2.99	2.75	2.94
12. My classes were well managed.	3.11	3.23	3.41	3.19	3.46	3.28
13. The class environment encouraged me to achieve excellent results.	3.16	3.33	3.42	3.26	3.46	3.33
14. Generally I was able to have input into the things I am learning.	3.00	3.16	3.24	3.13	3.09	3.12
15. My teachers were passionate and energetic about teaching.	3.04	3.33	3.58	3.33	3.61	3.38
16. My teachers used a variety of ways of explaining things.	3.08	3.11	3.42	3.21	3.51	3.27
17. My teachers were approachable.	3.26	3.47	3.65	3.49	3.86	3.55
18. My teachers talked to me as individuals.	3.05	3.22	3.57	3.32	3.70	3.37
19. My teachers implemented learning experiences with learning technologies that helped me learn.	3.01	2.82	3.08	2.75	3.03	2.94
20. My teachers implemented learning experiences that used learning technologies to cater for different needs of students.	2.86	2.77	3.00	2.83	3.06	2.90

Question - How often do you experience this?	Yr 8	Yr 9	Yr 10	Yr 11	Yr 12	overall
1 In general my teachers got me interested in the lesson material	2.12	1.91	2.00	2.11	2.38	2.10
2 My teachers encouraged me to achieve.	2.58	2.36	2.39	2.34	2.95	2.52
3 Teachers explained things well	2.30	2.19	2.20	2.31	2.54	2.30
4 My teachers told me about ways to remember what we were learning	2.20	1.80	1.81	1.93	1.86	1.92
5 My teachers would check our understanding of lesson material.	2.29	1.95	1.98	2.02	2.14	2.07
6 My teachers would closely look at ways in which we were learning.	2.25	1.84	1.84	1.87	1.81	1.92
7 My teachers lessons were well organised.	2.53	2.54	2.62	2.71	3.16	2.71
8 My teachers would generally try to provide for different students learning needs.	2.33	1.98	1.90	2.19	2.30	2.14
9 My teachers would provide useful feedback.	2.42	2.21	2.33	2.28	2.81	2.41
10 My teachers push me to do my best during class.	2.13	1.99	2.11	2.21	2.27	2.14
11 My teachers arranged for students to have some choice in class activity.	1.96	1.93	1.75	1.97	2.19	1.96
12 My classes were well managed.	2.39	2.32	2.32	2.37	2.78	2.43
13 The class environment encouraged me to achieve excellent results.	2.28	2.11	1.99	2.10	2.19	2.13
14 Generally I was able to have input into the things I am learning	2.37	2.09	2.20	2.06	2.26	2.19
15 My teachers were passionate and energetic about teaching.	2.17	2.11	2.11	2.31	2.86	2.31
16 My teachers used a variety of ways of explaining things.	2.30	1.99	2.21	3.50	2.54	2.50
17 My teachers were approachable.	2.57	2.54	2.47	2.82	3.08	2.69
18 My teachers talked to me as individuals.	2.39	2.24	2.21	2.52	2.97	2.46
19 My teachers implemented learning experiences with learning technologies that helped me learn.	2.53	2.24	2.10	2.13	2.23	2.24
20 My teachers implemented learning experiences that used learning technologies to cater for different needs of students.	2.40	2.09	1.99	1.96	2.16	2.12

In 2013 the school trialed a new method of gathering information from students. More than 230 students, from each year level were asked to provide feedback on aspects of teaching and learning. A gap analysis was undertaken to identify those areas where there is the greatest disparity between how important an aspect of teaching was, compared with how often that occurs. There are two particular areas that the school would like to focus on for 2014. These relate to the explanations teachers give and the frequency of teachers checking for understanding during lessons. Our next step is for teachers to undertake the same survey, and to undertake a gap analysis to determine if the perceptions teachers have of the teaching and learning process is similar or different to that of students.

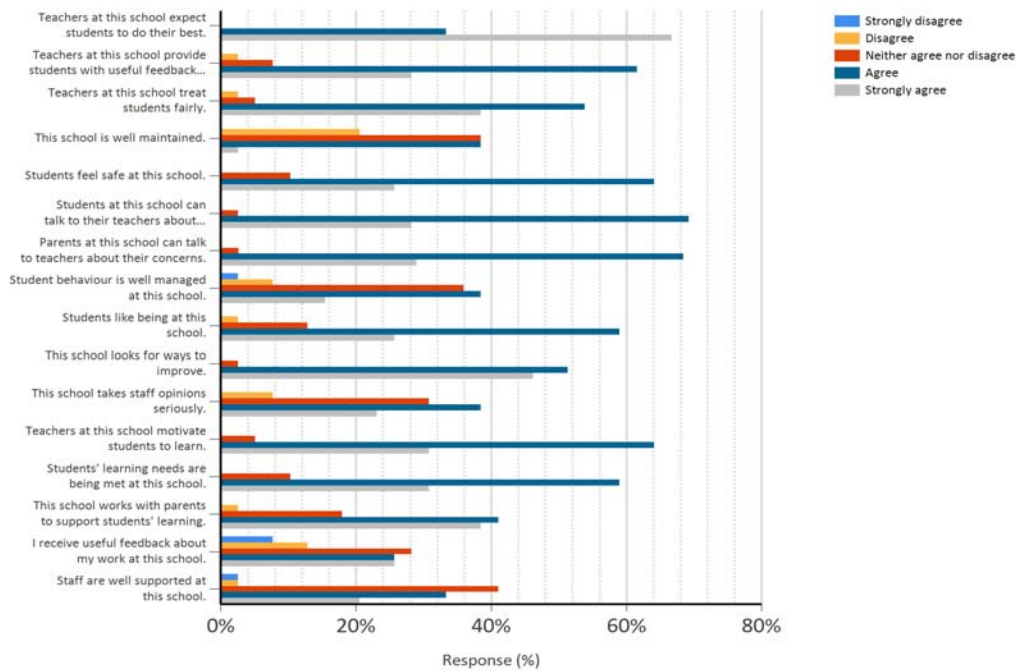
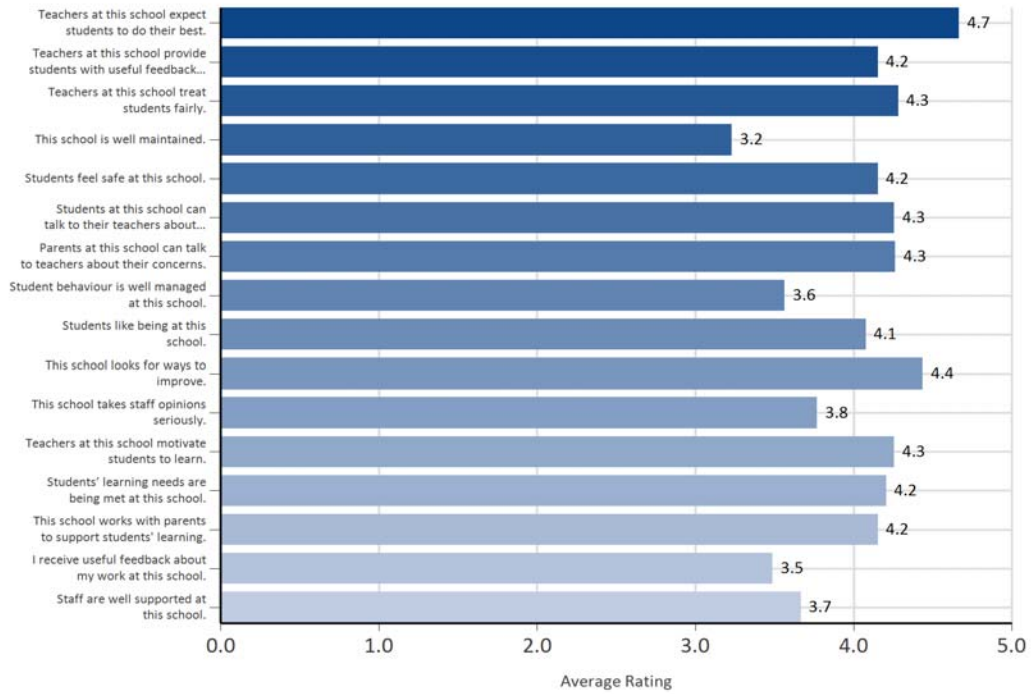
## Parent Data



Parents express the opinion that their child likes attending the school and feels safe at school. They feel confident that they can talk with their child's teacher about concerns which arise. Parents are less convinced that every child's learning needs are being met, or that teachers sufficiently motivate their child to learn. We will continue to focus our improvement work on increasing student engagement and achievement through task redesign. This is the first year that the school has used this data and will monitor trends over time to respond appropriately.



Staff Data



Staff have the opinion that teachers expect students to do their best, that the school looks for ways to improve and that students and parents can talk with them about their concerns. They are less convinced that the school is well maintained, or that they receive useful feedback about their work. This is the first year that the school has used this data and will monitor trends over time to respond appropriately.

## Staff

## Workforce Data for Annual Report 2013

## 0797 - Unley High School

## Teacher Qualifications

Qualification Level	Number of Qualifications
Bachelor Degrees or Diplomas	168
Post Graduate Qualifications	63

*Teacher Qualifications*

All teachers at this school are qualified and registered with the SA Teachers Registration Board.

*Workforce Composition including Indigenous staff*

Workforce Composition	Teaching Staff		Non-Teaching Staff	
	Indigenous	Non Indigenous	Indigenous	Non Indigenous
Full-time Equivalents	0.00	79.70	0.00	24.99
Persons	0	87	0	34

## Financial Statement

*Income by Funding Source*

	Funding Source	Amount
1	Grants: State	\$10,871,705.96
2	Grants: Commonwealth	
3	Parent Contributions	\$1,365,260.81
4	Other	\$737,841.37

1:UNLEY HIGH SCHOOL  
 General Ledger Balance Sheet for Prior Year, period 13

finglbl1

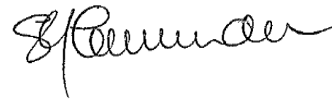
===== Assets =====		
<b>CASH (CURRENT)</b>		
A-CHE-1120	HOME ECONOMICS - HOME EC PETTY CASH	200.00
A-CSG-1120	SCIENCE - PETTY CASH	100.00
A-ZZZ-1110	CASH AT BANK - SCHOOL	132,710.05
A-ZZZ-1120	PETTY CASH - SCHOOL	400.00
A-ZZZ-1150	CASH ADVANCE - SCHOOL	4,960.00
<b>Total for CASH (CURRENT)</b>		<b>138,370.05</b>
<b>INVESTMENTS (CURRENT)</b>		
A-ZZZ-1210	SASIF INVESTMENT - SCHOOL	1,080,299.74
A-ZZZ-1220	SASIF INVESTMENT - BUILDING FUND	49,389.45
<b>Total for INVESTMENTS (CURRENT)</b>		<b>1,129,689.19</b>
<b>RECEIVABLES (CURRENT)</b>		
A-ZZZ-1310	ACCOUNTS RECEIVABLE	233,613.98
A-ZZZ-1350	PROVISION FOR DOUBTFUL DEBTS	(20,000.00)
<b>Total for RECEIVABLES (CURRENT)</b>		<b>213,613.98</b>
<b>OTHER ASSETS (CURRENT)</b>		
A-ZZZ-1520	PREPAYMENTS	16,649.20
<b>Total for OTHER ASSETS (CURRENT)</b>		<b>16,649.20</b>
<b>GLOBAL BUDGET ASSETS</b>		
A-ZZG-15118	ACCRUED RECURRENT FUNDING	155,651.97
<b>Total for GLOBAL BUDGET ASSETS</b>		<b>155,651.97</b>
<b>FURNITURE AND EQUIPMENT</b>		
A-CAB-2650	ASSETS - MUSIC EQUIPMENT	7,000.00
A-CAB-2651	ASSETS - ACC DEPR MUSIC EQUIPMENT	(350.00)
A-SSR-2650	ROWING - EQUIPMENT GENERAL	198,608.44
A-SSR-2651	ROWING - ACC DEPR EQUIPMENT GENERAL	(116,672.87)
A-ZDM-2650	ADMIN EQUIPMENT GENERAL	9,601.92
A-ZDM-2651	ADMIN - ACC DEPR EQUIPMENT	(400.08)
A-ZZF-2650	EQUIPMENT GENERAL	11,500.00
A-ZZF-2651	ACC DEPR EQUIPMENT GENERAL	(2,491.67)
A-ZZI-2650	IT - EQUIPMENT GENERAL	86,642.08
A-ZZI-2651	IT - ACC DEPR EQUIPMENT GENERAL	(78,822.70)
A-ZZP-2650	PRINTING PHOTOCOPIER EQUIPMENT	52,538.00
A-ZZP-2651	PRINT/PHOTO - ACC DEPR EQUIPMENT	(18,688.64)
<b>Total for FURNITURE AND EQUIPMENT</b>		<b>148,464.48</b>
<b>Total Assets</b>		<b>1,802,438.87</b>
===== Liabilities =====		
<b>LIABILITIES</b>		
L-ZZZ-3555	WHOLE SCHOOL - LIABILITIES	(1,235.57)
<b>Total for LIABILITIES</b>		<b>(1,235.57)</b>
<b>PAYABLES (CURRENT)</b>		
L-ZZZ-3210	ACCOUNTS PAYABLE	70,472.90
<b>Total for PAYABLES (CURRENT)</b>		<b>70,472.90</b>
<b>OTHER LIABILITIES (CURRENT)</b>		
L-ZZS-3540	SCHOOL CARD GRANT	(9,497.10)
L-ZZZ-3515	WS - GST HOLDING ACCOUNT	(18,170.35)
L-ZZZ-3560	ACCRUED EXPENSES	630.45
L-ZZZ-3570	REVENUE RECEIVED IN ADVANCE	350.00
<b>Total for OTHER LIABILITIES (CURRENT)</b>		<b>(26,687.00)</b>
<b>SCHOOL EQUITY</b>		
F-ZZZ-5100	ACCUMULATED SURPLUS	1,166,645.50
F-ZZZ-5110	NET INCOME TO DATE	387,570.91
F-ZZZ-5200	GENERAL RESERVE	260,000.00
	SURPLUS/(DEFICIT) CURRENT PERIOD	(54,327.87)

1:UNLEY HIGH SCHOOL  
General Ledger Balance Sheet for Prior Year, period 13

finglb11

Total for SCHOOL EQUITY	<u>1,759,888.54</u>
Total Liabilities and Equity	<u><u>1,802,438.87</u></u>

Subject to Audit & Balance Day Adjustments



1:UNLEY HIGH SCHOOL  
General Ledger Profit and Loss for Prior Year, period 13

FINGLPL1

Account	Description	PTD Posting	YTD Posting
<b>GRANTS : DETE</b>			
R-CCG-6195	GRANTS CURRICULUM - REVENUE	0.00	79,157.64
R-ZDS-6170	SALARY - STAFF CONVERSION	0.00	10,979.50
R-ZZM-6196	MAINTENANCE FUNDING	0.00	85,318.50
R-ZZS-6173	SCHOOL CARD SURPLUS	0.00	(135.00)
<b>Total for GRANTS : DETE</b>		<b>0.00</b>	<b>175,320.64</b>
<b>GLOBAL BUDGET REVENUE</b>			
R-CPX-61951	GB-FLEXIBLE LEARNING OPTIONS	0.00	58,906.75
R-ZDF-65125	GB-ESL SUPP NAP EXIT STUDENTS	0.00	4,118.02
R-ZDS-65118	GB-TCH SUPPLEMENTATION	0.00	127,683.39
R-ZDS-65119	GB-SSO SUPPLEMENTATION	0.00	42,508.50
R-ZZF-61571	GB-BREAKDOWN MAINTENANCE REIMB	0.00	28,468.48
R-ZZG-6142	GLOBAL BUDGET	0.00	10,547,203.51
R-ZZG-61471	GB-RECONCILIATION	0.00	14,772.58
R-ZZH-61334	GB-PLU VACINATIONS	0.00	1,920.00
R-ZZI-63161	DIGITAL EDUCATION REVOLUTION	0.00	85,162.19
<b>Total for GLOBAL BUDGET REVENUE</b>		<b>0.00</b>	<b>10,910,743.42</b>
<b>OTHER STATE GOVERNMENT GRANTS</b>			
R-ZOX-6295	STATE GRANTS	0.00	6,075.00
<b>Total for OTHER STATE GOVERNMENT GRANTS</b>		<b>0.00</b>	<b>6,075.00</b>
<b>GRANTS : COMMONWEALTH</b>			
R-CPT-6325	ABORIGINAL PROGRAM ASSIT SCHEME	0.00	750.00
R-ZZI-6395	INFORMATION TECH SYSTEMS - DER	0.00	261,764.00
<b>Total for GRANTS : COMMONWEALTH</b>		<b>0.00</b>	<b>262,514.00</b>
<b>PARENT CONTRIBUTION REVENUE</b>			
R-CAA-6860	AO PRINTER - REVENUE	0.00	1,298.64
R-CAB-6495	DRAMA/MUSIC - REVENUE	0.00	1,193.48
R-CCH-6830	ACCESS TO EQUIPMENT	0.00	869.55
R-CCR-6430	LIBRARY - REVENUE	0.00	328.41
R-CCT-6480	TEXT BOOK REVENUE	0.00	2,418.25
R-CHE-6495	HOME EC/CHILD STUDIES REVENUE	0.00	17,807.27
R-CHO-6495	OUTDOOR ED REVENUE	0.00	11,700.00
R-CHP-6495	PE HEALTH REVENUE	0.00	5,950.00
R-CHV-6495	SPECIALIST ROWING	0.00	21,500.00
R-CLL-6495	LOTE - REVENUE	0.00	11,290.63
R-CMM-6495	MATHS - REVENUE	0.00	2,552.00
R-CMT-6484	GRAPHIC CALCULATORS	0.00	960.00
R-CSG-6495	SCIENCE - REVENUE	0.00	10,208.00
R-CTC-6495	COMPUTING REVENUE	0.00	525.00
R-CTT-6495	TECH STUDIES - REVENUE	0.00	2,365.00
R-CVS-6495	SOSE - REVENUE	0.00	2,320.00
R-CXC-6460	TRIP /CAMP - REVENUE	0.00	381,595.89
R-CXE-6470	EXCURSION REVENUE	0.00	11,120.14
R-CXR-6484	YEAR 11 ACTIVITIES	0.00	12,464.61
R-CXT-6484	YEAR 12 ACTIVITIES	0.00	29,949.27
R-SGE-6486	03DNU - REVISION GUIDES	0.00	115.00
R-SGE-6488	COMPETITIONS/EXAMS	0.00	376.50
R-SSA-6495	SPORT REVENUE	0.00	29,794.00
R-SSR-6410	ROWING - STUDENT FEES	0.00	35,535.00
R-SSR-6460	ROWING - CAMP REVENUE	0.00	33,024.63
R-ZBA-6484	SCHOOL SALES - GENERAL	0.00	25,453.11
R-ZBA-6486	REV GUIDES/WORKBOOKS	0.00	(712.73)
R-ZZS-6410	MATERIALS & SERVICES FEE	0.00	707,668.00
R-ZZS-6411	STUDENT PLANNERS	0.00	147.30
R-ZZS-6412	ID CARDS	0.00	350.00
R-ZZS-6415	M&S FEE REFUND	0.00	(100.00)
<b>Total for PARENT CONTRIBUTION REVENUE</b>		<b>0.00</b>	<b>1,360,066.95</b>
<b>OTHER OPERATING REVENUE</b>			

1:UNLEY HIGH SCHOOL  
 General Ledger Profit and Loss for Prior Year, period 13

FINGLPL1

Account	Description	PTD Posting	YTD Posting
R-CCX-6890	EXTRA CURRIC ACT - OTHER INCOME	0.00	12,326.21
R-COV-6410	VET - REVENUE	0.00	2,700.00
R-COV-6440	VET REVENUE	0.00	52,208.73
R-SGX-6890	INTERNATIONAL STUDENTS	0.00	509,375.00
R-SPP-6875	STUDENT AWARDS	0.00	377.75
R-SSR-6820	ROWING - DONATION NPSE FUNDRAISING	966.00	14,726.70
R-SSR-6870	ROWING - SALES OTHER	0.00	14,254.34
R-SSR-6890	ROWING - OTHER INCOME	0.00	2,238.00
R-ZBA-6870	PADLOCK SALES	0.00	5,082.47
R-ZOR-6870	NPSE OLD SCHOLARS REUNION	0.00	690.00
R-ZSD-6820	SPECIAL PROJECTS	0.00	59.12
R-ZUU-6840	UMS - RENTAL	0.00	3,272.72
R-ZUU-6870	UMS - SALES	0.00	4,009.36
R-ZUU-6890	UNIFORM COMMISSION	381.98	9,157.20
R-ZZF-6840	HIRE OF FACILITIES	0.00	11,379.00
R-ZZF-6890	FACILITIES - REVENUE	0.00	3,946.07
R-ZZI-6870	IT - REVENUE	0.00	159.55
R-ZZP-6860	PHOTOCOPY SALES - PRINT	0.00	670.71
R-ZZR-6820	FUNDRAISING INCOME	966.00	82,835.38
R-ZZT-6180	GRANT - T&D	0.00	45.45
R-ZZT-6890	T & D - OTHER REVENUE	0.00	19,000.00
R-ZZZ-6815	DONATIONS	0.00	7,000.00
R-ZZZ-6850	INTEREST REVENUE	85.15	41,603.22
R-ZZZ-6890	OTHER REVENUE	0.00	5,938.29
<b>Total for OTHER OPERATING REVENUE</b>		<b>2,399.13</b>	<b>803,055.27</b>
<b>NON-OPERATING REVENUE</b>			
R-ZZZ-6950	TRANSFER CANTEEN PROFIT	0.00	10,000.00
R-ZZZ-6999	WHOLE SCHOOL - TRANSIT REVENUE	0.00	5,142.06
<b>Total for NON-OPERATING REVENUE</b>		<b>0.00</b>	<b>15,142.06</b>
<b>Total Revenue</b>		<b>2,399.13</b>	<b>13,532,917.34</b>

SUPPLIES AND SERVICES

1:UNLEY HIGH SCHOOL  
General Ledger Profit and Loss for Prior Year, period 13

FINGLPL1

Account	Description	PTD Posting	YTD Posting
E-CAA-7121	ART/DESIGN - CONSUMABLES	0.00	28,839.60
E-CAA-7163	ART/DESIGN - PRINTING	0.00	2,889.83
E-CAA-7184	AO PRINTER	0.00	2,974.17
E-CAB-7121	DRAMA/MUSIC - CONSUMABLES	0.00	21,825.94
E-CAB-7163	DRAMA/MUSIC - PRINTING	0.00	2,106.45
E-CCC-7121	COUNSELLORS - CONSUMABLES	0.00	938.66
E-CCC-7163	COUNSELLORS - PRINTING	0.00	207.65
E-CCC-7199	COUNSELLORS - OTHER	0.00	2,511.60
E-CCF-7121	EXPENSES	0.00	429.19
E-CCF-7163	RESEARCH PROJECT PRINTING	0.00	1,387.80
E-CCG-7199	GRANTS - CURRICULUM	12,657.50	85,233.72
E-CCH-7148	EQUIPMENT REPLACEMENT	0.00	26,948.96
E-CCL-7121	SDP - CONSUMABLES	0.00	145.45
E-CCP-7121	CHAPLAIN - CONSUMABLES	0.00	127.27
E-CCQ-7121	PLP & WORK ED - CONSUMABLES	0.00	602.50
E-CCQ-7163	PLP & WORK ED - PRINTING	0.00	720.30
E-CCR-7121	LIBRARY - CONSUMABLES	0.00	39,450.30
E-CCR-7148	RC - EQUIP/TEXT	0.00	1,084.60
E-CCR-7163	LIBRARY - PRINTING	0.00	663.70
E-CCT-7121	TEXT BOOK EXPENSE	0.00	60,221.68
E-CCT-7199	TEXT BOOK RECOVERY/REPAIR	0.00	1,880.00
E-CCU-7199	SOCIAL JUSTICE	0.00	284.73
E-CCW-7121	STUDENT WELL BEING	0.00	9,356.97
E-CCW-7163	PASTORAL CARE PRINTING	0.00	14,872.19
E-CCX-7121	EXTRA CURRIC ACT - CONSUMABLES	0.00	13,626.96
E-CCZ-7184	CROSS CURRICULUM EXPENSES	0.00	9,600.13
E-CEE-7121	ENGLISH - CONSUMABLES	0.00	6,799.06
E-CEE-7163	ENGLISH - PRINTING	0.00	3,991.63
E-CES-7121	ESL - CONSUMABLES	0.00	1,151.75
E-CES-7163	ESL - PRINTING	0.00	457.25
E-CHE-7121	HOME EC/CHILD STUDIES - CONSUMABLES	0.00	43,469.58
E-CHE-7163	HOME EC/CHILD STUDIES - PRINTING	0.00	3,074.23
E-CHO-7121	OUTDOOR EDUCATION	0.00	14,112.86
E-CHO-7143	OUTDOOR ED EQUIPMENT HIRE	0.00	2,124.79
E-CHO-7163	OUTDOOR ED PRINTING	0.00	0.15
E-CHP-7121	PE HEALTH - CONSUMABLES	0.00	33,835.26
E-CHP-7163	PE HEALTH - PRINTING	0.00	3,126.45
E-CLL-7121	LOTE - CONSUMABLES	0.00	13,893.07
E-CLL-7163	LOTE - PRINTING	0.00	2,322.78
E-CMM-7121	MATHS - CONSUMABLES	0.00	8,877.39
E-CMM-7163	MATHS - PRINTING	0.00	7,797.21
E-COA-7121	PL - CONSUMABLES	0.00	1,887.17
E-COA-7163	PL - PRINTING	0.00	307.65
E-COA-7199	PERSONALISED LEARNING - EXPENSES	0.00	11,526.79
E-COV-7121	VET	0.00	57,510.24
E-COV-7163	VET - PRINTING	0.00	302.10
E-COV-7199	VOCATIONAL EDUCATION	0.00	2,249.16
E-CPG-7121	GIFTED & TALENTED - CONSUMABLES	0.00	1,135.00
E-CPG-7163	GIFTED & TALENTED PRINTING	0.00	6.75
E-CPO-7121	ASSESSMENT/REPORTING - CONSUMABLES	0.00	1,040.00
E-CPO-7163	ASSESS/REPORTING - PRINTING	0.00	1,207.45
E-CPT-7199	ABORIGINAL PROGRAM ASSIST	0.00	750.00
E-CPX-7121	FLEXIBLE LEARNING OPTIONS	0.00	28,298.16
E-CSG-7121	SCIENCE - CONSUMABLES	0.00	41,518.01
E-CSG-7163	SCIENCE - PRINTING	0.00	14,730.97
E-CTC-7121	COMPUTING STUDIES - CONSUMABLES	0.00	740.66
E-CTC-7163	COMPUTING STUDIES - PRINTING	0.00	363.75
E-CTT-7121	TECH STUDIES - CONSUMABLES	0.00	54,872.56
E-CTT-7148	TECH STUDIES - EQUIP/TEXT	0.00	140.22
E-CTT-7163	TECH STUDIES - PRINTING	0.00	735.75
E-CTX-7121	TECHNOLOGY - TEXTILES	0.00	3,312.20
E-CVS-7121	SOSE - CONSUMABLES	0.00	5,798.67
E-CVS-7163	SOSE - PRINTING	0.00	4,569.20
E-SGS-7121	STUDENT VOICE	0.00	4,204.63
E-SGX-7199	INTERNATIONAL STUDENTS	0.00	153,149.24
E-SPP-7178	STUDENT AWARDS	0.00	10,065.17
E-SSA-7121	SPORT - CONSUMABLES	0.00	30,278.11
E-SSA-7142	SPORT - HIRE OF FACILITIES	0.00	95.46
E-SSA-7163	SPORT - PRINTING	0.00	1.55
E-SSA-7178	SPORT - EXPENSE	0.00	4,981.00
E-SSA-7194	SPORT - TRANSPORT/CABCHARGE	0.00	931.82
E-SSA-7199	SPORT - COACHING	0.00	14,852.00
E-SSR-7121	ROWING - UHS BUDGET	0.00	2,462.00
E-SSR-7145	ROWING - INSURANCE	0.00	18,434.40
E-SSR-7148	ROWING - MINOR EQUIPMENT	0.00	7,355.64

1:UNLEY HIGH SCHOOL  
 General Ledger Profit and Loss for Prior Year, period 13

FINGLPL1

Account	Description	PTD Posting	YTD Posting
E-SSR-7155	ROWING - COACHING	0.00	10,209.62
E-SSR-7163	ROWING - PRINTING	0.00	396.15
E-SSR-7169	ROWING - REP/MAINT	0.00	15,863.37
E-SSR-7178	ROWING - HEAD OF RIVER - NPSE	0.00	7,658.98
E-SSR-7184	ROWING - GENERAL EXPENSES	0.00	3,653.69
E-SSR-7199	ROWING - REGATTA/SARA CHARGES	0.00	15,313.48
E-ZBA-7166	PADLOCK SALES	0.00	9,384.00
E-ZDC-7121	SCHOOL COUNCIL	0.00	1,318.08
E-ZDM-7106	ADMIN - PUBLICITY AND PROMOTIONS	0.00	13,105.26
E-ZDM-7121	ADMIN - OFFICE CONSUMABLES	0.00	3,458.24
E-ZDM-7163	ADMIN - PRINTING	0.00	16,394.90
E-ZDM-7172	ADMIN - CLASSROOM EXPENSE	0.00	484.60
E-ZDM-7199	ADMIN - OTHER EXPENDITURE	0.00	54,694.17
E-ZDP-7121	PRINCIPAL FUND - SC	0.00	2,264.79
E-ZDP-7184	DEPUTY PRINCIPAL'S - EXPENSES	0.00	1,138.08
E-ZOR-7178	OLD SCHOLARS - REUNIONS	0.00	790.00
E-ZOX-7199	GRANTS - STATE	0.00	6,871.15
E-ZOZ-7199	GRANTS - COMMONWEALTH	0.00	6,650.00
E-ZSD-7199	SPECIAL PROJECTS	0.00	6.60
E-ZZA-7121	HEALTH SERVICES - FIRST AID	0.00	2,643.63
E-ZZF-7140	SITE - FURNITURE	0.00	39,472.95
E-ZZH-7121	OHS - CONSUMABLES	0.00	2,094.35
E-ZZH-7169	OHS - AUDIT MAINTENANCE 2012	0.00	321.84
E-ZZI-7148	IT - HARDWARE	0.00	10,644.51
E-ZZI-7151	IT - NETWORK	0.00	22,187.52
E-ZZI-7169	IT - REPAIRS / MAINTENANCE	0.00	72,254.79
E-ZZI-7172	IT - BUDGET REQUESTS	0.00	76,365.00
E-ZZI-7176	IT - SOFTWARE MAINTENANCE	0.00	10,480.67
E-ZZI-7184	IT - DOWNLOADS	0.00	3,702.75
E-ZZI-7199	IT - OTHER	0.00	197,095.70
E-ZZP-7121	PHOTOCOPIER - PAPER SUPPLY	0.00	13,274.53
E-ZZP-7143	PRINTING - HIRE EQUIPMENT	0.00	22,023.99
E-ZZP-7184	PHOTOCOPIER - MISCELLANEOUS	0.00	505.00
E-ZZP-7199	PRINTING - COMPUTER TONER SUPPLIES	0.00	3,112.91
E-ZZR-7139	FUNDRAISING	966.00	50,672.24
E-ZZS-7199	CHARGES - CONSUMABLES	0.00	20,038.18
E-ZZZ-7116	SCHOOL CATERING	0.00	3,914.13
E-ZZZ-7136	FREIGHT	0.00	3,966.52
E-ZZZ-7145	INSURANCE	0.00	818.15
E-ZZZ-7160	POSTAGE	0.00	10,193.95
E-ZZZ-7175	SECURITY	0.00	4,725.00
<b>Total for SUPPLIES AND SERVICES</b>		<b>13,623.50</b>	<b>1,693,940.76</b>
<b>GLOBAL BUDGET EXPENSES</b>			
E-ZDO-73133	GB-TELEPHONE CHARGES-RENTAL	0.00	3,758.21
E-ZDO-73134	GB-TELEPHONE CHARGES-LOCAL CALLS	0.00	4,965.78
E-ZDO-73135	GB-TELEPHONE CHARGES-STD CHARGES	0.00	1,134.51
E-ZDO-73136	GB-TELEPHONE CHARGES-MOBILE PHONES	0.00	2,189.61
E-ZDS-71111	GB-SAL/WAGES-TEACHERS	0.00	8,364,013.04
E-ZDS-71112	GB-SAL/WAGES-ANCILLARY	0.00	1,449,609.89
E-ZDS-71114	GB-SAL/WAGES-TRT	(12,657.50)	331,454.50
E-ZZF-73142	GB - ELECTRICITY EXPENSES	0.00	144,755.37
E-ZZF-73143	GB - GAS EXPENSES	0.00	6,605.67
E-ZZF-73145	GB - RATES-WATER	0.00	(3,213.88)
E-ZZF-73146	GB - RATES-WATER USAGE	0.00	101,757.66
E-ZZF-73147	GB - RATES-SEWER	0.00	19,195.74
E-ZZF-73288	GB - WASTE DISPOSAL	0.00	14,016.09
E-ZZF-73511	GB - REPAIRS & MAINTENANCE	0.00	111,362.53
E-ZZI-75177	GB-MICROSOFT LICENCE RECHARGE	0.00	7,900.00
E-ZZZ-73275	GB-FEES & CHARGES	0.00	661.65
<b>Total for GLOBAL BUDGET EXPENSES</b>		<b>(12,657.50)</b>	<b>10,560,166.37</b>
<b>FACILITIES AND UTILITIES EXPENSES</b>			



02:05PM Tuesday, 18 February 2014

Page 5 of 6

1:UNLEY HIGH SCHOOL  
 General Ledger Profit and Loss for Prior Year, period 13

FINGLPL1

Account	Description	PTD Posting	YTD Posting
E-ZZF-7169	SITE - FACILITIES	0.00	19,607.27
E-ZZF-7175	SITE - SECURITY	0.00	22,534.42
E-ZZF-7184	SITE - REPAIRS & MAINTENANCE	0.00	5,960.39
E-ZZF-7210	SITE - BUILDING MAINTENANCE	0.00	4,455.37
E-ZZF-7220	SITE - CLEANING	0.00	11,456.54
E-ZZF-7225	GB - CLEANING ONGOING	0.00	146,507.14
E-ZZF-7226	GB - CLEANING PERIODIC	0.00	27,724.95
E-ZZF-7250	SITE - GROUNDS MAINTENANCE	0.00	3,378.56
E-ZZF-7255	SITE - GENERAL MAINTENANCE	0.00	15,512.19
E-ZZF-7950	SITE - BUILDING PROJECTS	0.00	11,862.00
E-ZZM-7210	MAINTENANCE FUNDING	0.00	103,019.65
<b>Total for FACILITIES AND UTILITIES EXPENSES</b>		<b>0.00</b>	<b>372,018.48</b>
<b>FINANCIAL EXPENSES</b>			
E-ZDM-7410	ADMIN - BANK CHARGES	0.00	9,132.72
<b>Total for FINANCIAL EXPENSES</b>		<b>0.00</b>	<b>9,132.72</b>
<b>EMPLOYEE EXPENSES</b>			
E-ZDS-7335	SALARY - STAFF CONVERSION EXPENSES	0.00	(2,574.00)
E-ZZT-7393	STAFF PROFESSIONAL DEVELOPMENT	0.00	25,936.09
E-ZZT-7394	TRAINING & DEVELOPMENT - OTHER	0.00	42,347.89
<b>Total for EMPLOYEE EXPENSES</b>		<b>0.00</b>	<b>65,709.98</b>
<b>OTHER OPERATING EXPENSES</b>			
E-ZZP-7670	PRINTING - COPY COSTS	0.00	(45,326.16)
E-ZZZ-7620	BAD DEBT EXPENSES	0.00	18,097.19
E-ZZZ-7660	INTEREST EXPENSES	0.00	0.01
E-ZZZ-7699	ASSET WRITE OFF	0.00	(15,000.00)
<b>Total for OTHER OPERATING EXPENSES</b>		<b>0.00</b>	<b>(42,228.96)</b>
<b>PARENT CONTRIBUTION EXPENSES</b>			
E-CHV-7121	SPECIALIST ROWING	0.00	24,757.28
E-CMT-7940	GRAPHIC CALCULATORS	0.00	(418.18)
E-CXC-7910	TRIP/CAMP - EXPENSES	18,089.34	366,990.30
E-CXE-7930	EXCURSIONS	0.00	8,738.96
E-CXP-7940	YEAR 10 ACTIVITIES	0.00	4,685.26
E-CXR-7940	YEAR 11 ACTIVITIES	0.00	13,576.12
E-CXT-7940	YEAR 12 ACTIVITIES	0.00	30,896.68
E-SGE-7920	COMPETITIONS / EXAMS	0.00	399.00
E-SSR-7910	ROWING - CAMPS	0.00	24,694.32
E-ZBA-7940	SCHOOL SALES - EXPENSES	0.00	23,686.94
<b>Total for PARENT CONTRIBUTION EXPENSES</b>		<b>18,089.34</b>	<b>498,006.68</b>
<b>DEPRECIATION AND AMORTISATION</b>			
E-CAB-7530	DRAMA/MUSIC - DEPRECIATION	350.00	350.00
E-SSR-7530	ROWING - DEPR EQUIPMENT	12,957.48	12,957.48
E-ZDM-7530	ADMINISTRATION - DEPRECIATION	400.08	400.08
E-ZZF-7530	DEPR - EQUIPMENT	1,150.00	1,150.00
E-ZZI-7530	IT - DEPR EQUIPMENT	8,905.50	8,905.50
E-ZZP-7530	PRINTING - DEPR EQUIPMENT	13,908.60	13,908.60
<b>Total for DEPRECIATION AND AMORTISATION</b>		<b>37,671.66</b>	<b>37,671.66</b>
<b>NON-OPERATING EXPENSES</b>			

02:05PM Tuesday, 18 February 2014

Page 6 of 6

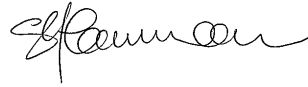
1:UNLEY HIGH SCHOOL  
 General Ledger Profit and Loss for Prior Year, period 13

FINGLPL1

Account	Description	PTD Posting	YTD Posting
E-ZZZ-7798	WHOLE SCHOOL - TRANSIT EXPENSE	0.00	5,256.61
<b>Total for NON-OPERATING EXPENSES</b>		<b>0.00</b>	<b>5,256.61</b>
<b>Total Expenses</b>		<b>56,727.00</b>	<b>13,199,674.30</b>
<b>Surplus or (Deficit) funds</b>		<b>(54,327.87)</b>	<b>333,243.04</b>

Subject to Audit + Balance Day Adjustments

Susan Cameron, Principal, Unley High School



Marcel De Ruyter, Chair, Unley High School Council

